

Mipeg 2000 Replacement Kit

We are pleased to share the replacement kit with you. The two main components consist of the new Mipeg X Compact 7" Operator's Display and the Mipeg X Computer Cabinet.

The Mipeg 2000 system is no longer available except for a limited number of spare parts and repair/support purposes only. The Mipeg X display is available in an Ex Zone 2 version and classified by LR, ABS, BV, and DNV GL.

The size is approx. 20x16x6.5 cm (8x6.3x2.5 inch), weight 1.6 kg (3.5 lbs). An optimal viewing angle is achieved using a pan and tilt bracket.

The ingress protection is IP66 (dust-tight and jets of water). Together with an operating temperature of -30 to +70°C (-22 to + 158°F), the display will be suitable for most applications.

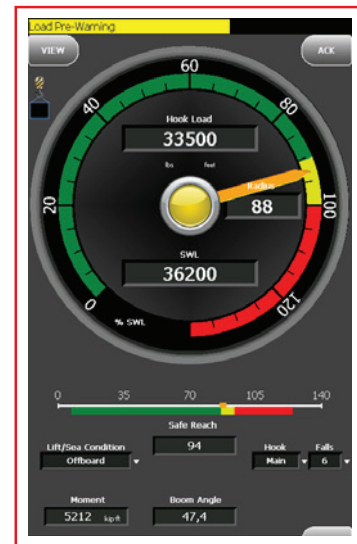
The dimmable background brightness will reduce the 1000 cd/m² display to suit night operation. The resistive touch screen technology will allow the unit to be operated if PPE like gloves is required.

The touch screen display will be the "easy to read - corner of the eye" Mipeg image, applauded by crane operators. We have added a few new features also including the "Safe Reach Indicator."

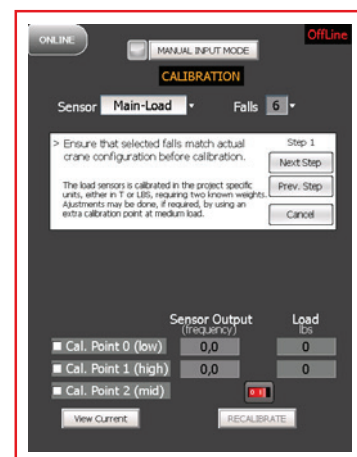
System calibration and adjustments are even simpler using "on-board help screens" and all done through "Offline" touch screen menus.

The Computer Cabinet replacement can be supplied either as:

- Replacing internal parts to an existing safe area cabinet
- A complete Ex zone certified unit with the same size as the existing Mipeg 2000 cabinet, pre-drilled to keep the current cable routing
- Pre-loaded with existing calibration and other settings



Typical online display



Offline calibration menu

Aanderaa Data Instruments AS
Sanddalsringen 5b
5843 Bergen, Norway

+47 55 60 48 00
aanderaa.info@xylem.com
Aanderaa.com



Mipeg X is a trademark of Xylem or one of its subsidiaries.
© 2021 Xylem, Inc. XA NF2021-N6 0521