

# Monitor the forces beneath the surface



Doppler Current Profiler Sensor (DCPS)



Doppler Current Sensor (DCS)



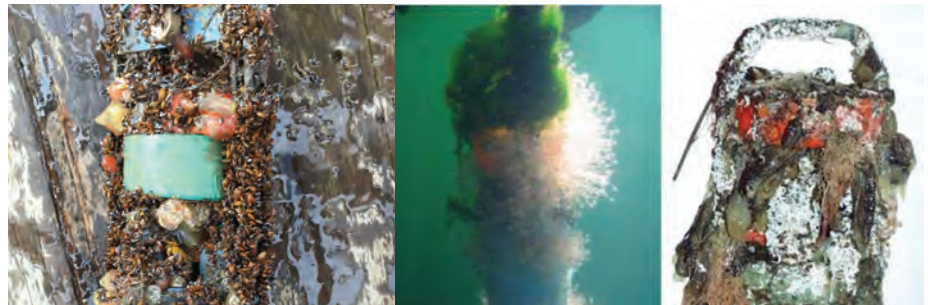
Aanderaa current sensors

## Why should you care about current measurements?

- Optimized feeding
- Timely water renewal
- Impact of the forces at different water depths on the aqua facility
- Find the most appropriate time for delousing
- Safe boat operations

## Our current sensors integrate well with new and existing aquaculture systems

- Easy to integrate the sensor with open protocols
- Can be included in new as well as existing systems
- Can be expanded with water quality sensors
- Made in Norway



Low maintenance, cleaning needed only once or twice a year